



WHAT IS FOOD FRAUD?

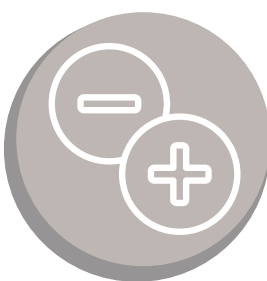
Food fraud involves intentional fraudulent actions aimed at financial and economic gain by breaking legal regulations, often at the customer's expense.



MOST COMMON TYPES OF FOOD FRAUD



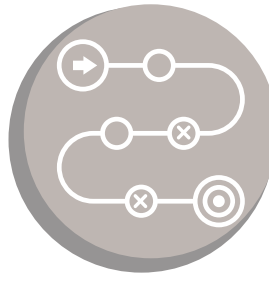
Mislabelling of products



Dilution, addition, removal or substitutions



Absent, falsified or manipulated documentation



Unapproved treatment and / or process

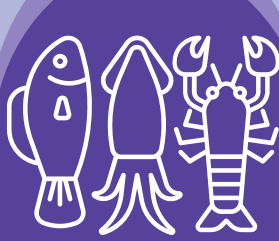


IPR Infringement

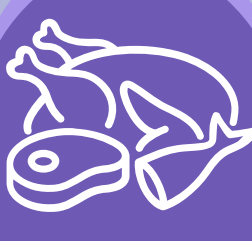
PRODUCTS THAT EXPERIENCE THE MOST FOOD FRAUD



Fats & oils



Fish & fish products



Meat & meat products



Fruit and vegetables



Poultry & poultry products

FOOD FRAUD FACTS



It is estimated that approximately 10% of the global food supply is affected by food fraud. ^[1]



Chocolate, along with cocoa products, ranks among the most frequently reported food categories involved in cases of fraud, encompassing mislabeling, dilution, and substitution, as highlighted in a report by the European Parliament's Committee on the Environment, Public Health and Food Safety. ^[2]



Substitution of high-value seafood species with cheaper alternatives is a common form of fraud, with studies suggesting that up to one-third of seafood samples worldwide may be substituted. ^[3]



The meat industry has witnessed a recent increase in food fraud incidents, with reports indicating a rise in cases involving mislabeling, substitution, and illegal processing. ^[4]

SOLUTION FOR FOOD FRAUD TSW Trace®

- TSW Trace® is a scientific solution used for provenance science services.
- This technology goes beyond determining the country or region of origin and can pinpoint the specific source, such as mine, farm, orchard, shed, or pond.
- Originally used for "gold fingerprinting" to trace stolen or smuggled gold back to its mine of origin.
- Every material carries a unique chemical signature from its environment or production process, enabling origin tracing.
- TSW Trace® has been used as a supply chain integrity tool to scientifically verify the claimed provenance of food and non-food items.
- The testing is independent of product labels and other systems, serving as a check on the integrity of supply chain systems.

[Watch our video about TSW Trace®](#)

<https://www.youtube.com/watch?v=T4w3o-BdDUc>



CONSUMER TIPS!



read labels carefully



look for certified products



be cautious of deals that seem too good to be true

Food fraud activities constitute a risk to human, animal or plant health, to animal welfare or to the environment.

WANT TO KNOW MORE

Protect your business and customers from food fraud! Contact Source Certain at sales@sourcecertain.com today, or visit the website at www.sourcecertain.com for expert solutions in safeguarding your supply chain.

